

# Cedar Falls



# Park Directory



Updated 6/2019

# Table of Contents

Beach House	13	Olsen's Riverside Park	17
Bess Streeter	3	Orchard Hill Park	18
Black Hawk Park	3	Overman Park	17
Big Woods Lake Recreation Area	4	Paw Park	19
Big Woods Campground	4	Peter Melendy Park	19
Bird Sanctuary	3	Place to Play Park-All Inclusive Playground	8
Birdsall Memorial Park	5	Police Officer's Park	17
Central Park	6	Pfeiffer Spring Park	20
Clay Street Park	7	Prairie Lakes Park	21
El Dorado Heights Park	7	Robinson-Dresser Sports Complex	19
Fairview Cemetery Tot Lot	8	Rownd Park	22
George Wyth Memorial State Park	8	Satori Memorial Hospital Park	22
Gateway Park	10	Seerley Park	22
Gateway Celebration Shelter	11	Skate Park	23
Greenhill Park	8	Southdale Park	23
Hartman Reserve Nature Center	9	Sturgis Park	23
Holmes Park	9	TJ's Park	24
Island Park	12	Tondro/Pray BMX Bike Park	25
Kiwanis Bluff Park	14	Tourist Park	24
Kuehn's Park	14	Ulrich Park	24
Lookout Park	15	Valley High Park	26
Main St. Cul de Sac	16	Veterans Park	26
Neighbors Park	16	Washington Park	27,28
Nordic Ridge Park	16		



**Acreage: 0.7 Acres**

**Facilities:**

Open Shelter

**Open Shelter Distances:**

To Road: **90ft.**

To Playground: **30ft .**



# Bess Streeter Aldrich Park

Location: 2900 Hiawatha Street

**About the Park**

Bess Streeter Aldrich was born in Cedar Falls in 1881. She authored many novels on pioneer life. "Song of Years" tells the early history of Sturgis Falls .

**Directions from Rec Center to Bess Streeter Aldrich Park**

1. Start out on Main St. Continue North.
2. Turn left onto W 6th St.
3. Take the 3rd right onto Franklin St.
4. Franklin St becomes Center St. across bridge.
5. Turn left onto Western Ave.
6. Western Ave becomes Hiawatha Rd.
7. 2900 HIAWATHA RD is on the left.



**Facilities:**

Birds  
Open Shelter

# Bird Sanctuary

Location: Cedar St.

**Directions from Rec Center to Main St. Cul de Sac**

1. Start out going South on Main St.
2. Continue South crossing University Ave, then crossing Greenhill Rd. Main St. ends in the Main St. Cul de Sac.

**Trail Access:**

Cedar Valley Lakes Trail

This quiet retreat area is managed by the Black Hawk County Conservation Board in conjunction with the YMCA. It features a new all-season lodge, finished in 1994, for large group gatherings of up to

**Acreage: 1,769 Acres**

**Facilities:**

Campground with  
Electric Hook Ups  
Water & Restrooms  
Picnic Areas with Fire Grills  
Showers  
4 Open Shelters  
Cabins For Rent

This is a State Park—we give out only the information provided here and are not affiliated with any events or services relating to State Parks.



# Black Hawk Park

Call 319-433-7275 for more information

Location: West Lone Tree Road

**About the Park**

This County Park is one of the largest Parks in Iowa. It forms a greenbelt along the Cedar River from Cedar Falls to Washington-Union Bridge, 4 miles to the north.

It also adjoins Railroad Lake and Beaver Creek Access to the west. Falls Access, a State-owned area managed by the Black Hawk County Conservation Board, is also located west, just across the Cedar River. The Rotary Reserve is also located on the west side of the River.

**Directions from Rec Center to Black Hawk Park**

1. Start out on Main St. Continue North.
2. Turn left onto W 6th St.
3. Take the 3rd right onto Franklin St.
4. Franklin St becomes Center St. Across bridge.
5. Turn left going West onto W Lone Tree Rd.



# Big Woods Lake Recreation Area

Location: Big Woods Rd

## About the Park

Acquired in 1992, this Park includes a 65 acre Lake which was created by sand and gravel extraction. A 10 acre natural prairie was installed in 2001. Fishing in the Lake is permitted, swimming is not.

**Acreage: 320.0 Acres**

### Directions from Rec Center to South Big Woods Lake

1. Start out on Main St. Continue North. Crossing 1st St.
2. Turn slight left onto Big Woods Rd.
3. BIG WOODS RD & IRONWOOD ST.
4. Your destination is just past Lark Ln.

If you reach the end of Big Woods Rd you've gone a little too far.

### Directions from Rec Center to North Big Woods Lake

1. Start out on going North on Main St.
2. Take the 1st right onto Waterloo Rd.
3. Merge onto IA-27 N via the ramp on the left.
4. Take the Lone Tree Rd exit, EXIT 189.
5. Turn left onto Lone Tree Rd.
6. Turn left onto Big Woods Rd.
7. BIG WOODS RD & E LAKE ST.

If you reach E Lake St you've gone a little too far.

The RV site includes full hookups: water, sewer and electric. The Big Woods Lake Recreation area provides a myriad of outdoor recreation opportunities including access to the metropolitan recreation trail system, boating, fishing, hiking and picnicking and a newly established 10-acre prairie. The remaining park grounds consist of floodplain-associated woodlands and wetland areas interlaced with small lakes, which were once old quarries and are now used for fishing.



## North Facilities off Lake St:

- Boat Ramp
- Open Shelter
- No-Wake Boating Lake
- Restrooms
- Parking Lot
- Campground

### Trail Access:

Big Woods Lake Trail

## South Facilities off Ironwood Rd:

- Boat Ramp
- Open Shelter
- No-Wake Boating Lake
- Restrooms
- Parking Lot
- Frisbee Golf Course

### Trail Access:

Big Woods Lake Trail

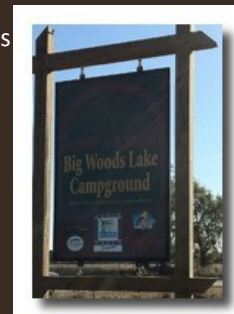
# Big Woods Campground

Location: North of Big Woods Lake

## About the Park

The City of Cedar Falls and Black Hawk Conservation Board offer a new RV Campground in the NE corner of Big Woods Lake, located on Lake Street east of Big Woods Road. The 12-acre site holds 55 RV campsites, one permanent cabin, tent camping, hard surface roadways and wireless internet service.

*For more information regarding campground reservations and prices, contact: [www.blackhawkcountyparks.com](http://www.blackhawkcountyparks.com) Black Hawk County Conservation Office at (319) 433-7275*



**Acreage: 250 Acres**

**Trail Access:**

Pheasant Ridge Trail

**Facilities:**

Pheasant Ridge Golf Course  
Walter's Ridge Golf Course  
Practice Range  
5 Ball Diamonds  
Open Shelter w/ Electricity  
Play Equipment  
Open Space  
Modern Restrooms  
2 Parking Lots  
Lake

# Birdsall Memorial Park

**Location:** Ball Fields; 12th & Lexington  
Golf Course; 3205 W. 12th

**About the Park**

Acquired in 1968, this Park has a two (2) acre natural lake and is one of the largest Parks in the Cedar Falls Park system.

**Directions from Hwy 58**

1. Take 58 to the Waterloo Rd. Exit.
2. Turn West on to Waterloo Road.
3. Waterloo Rd turns into 12th St at the stoplight on Main St.
4. Continue West on 12th St, crossing Hudson Rd at the stoplight.
5. Continue about a mile and the Main Park entrance is on the right.

**Directions from Rec Center**

1. Start out on Main St.
2. Take a Left going West at the stoplight at 12th & Main.
3. Continue West on 12th St, crossing Hudson Rd at the stoplight.
4. Continue about a mile and the Main Park entrance is on the right.

**Open Shelter Distances**

- To Road (12th St.): **750ft.**
- To Play Equip.: **50ft.**
- To Lake: **125ft.**
- To Parking Lot: **250ft.**
- To Restrooms: **250ft.**



**Acreage: 20.5 Acres**

**Facilities:**

- Play Equipment
- Lions Baseball Diamond
- Picnic Area
- Open Space
- Play Fields
- Parking Lot

**Park Distances:**

- To parking lot: **170ft.**
- To road (E. Seerley Blvd.): **350ft**

# Central Park

Location: 404 E. Seerley Blvd.

**About the Park**

This Park was adjacent to Ray Edwards Pool. It at one time was home to a teen center.

**Directions from Rec Center to Central Park**

1. Start out on Main St.
2. Go South take a left on to Seerley Blvd at the stoplight.
3. Park is ahead to the left across from Peet Jr High.

## LIONS BASEBALL FIELD

\*Lions Baseball Field is located by the CF Amvets

\*Entrance to get to Lions Baseball field is across from Peppers on E. 18th St.





**Directions from Rec Center to Clay St Park**

1. Start out going South on Main St.
2. Take a Right going West on to 15th St.
3. 15th ST. & CLAY ST.

# Clay Street Park

Location: 15th St & Clay St

About the Park

Acquired in 1974, this park is a good spot for picnicking.

**Acreage: 1.1 Acres**

**Facilities:**

- Open Shelter
- Open Space
- Basketball Court
- Playground/Swings

**Open Shelter Distances**

- To road (15th & Clay): **40ft.**
- To Playground: **10ft.**
- To Basketball court: **160ft.**



# El Dorado Heights Park

Location: Quesada Ave & Cordoba Ave

**Acreage: 2.0 Acres**

**Facilities:**

- Play Equipment
- Handicapped Play Equipment
- Open Shelter
- Open Space

**Trail Access:**

- Cedar Prairie Trail

**Open Shelter Distances**

- To road: **315ft.**
- To Playground: **30ft.**
- To Cedar Prairie Trail: **100ft.**

**Directions from Rec Center to El Dorado Park**

1. Start out going South on Main St.
2. Continue South crossing University Ave. & crossing Greenhill Rd.
3. Turn Right on Cordoba, park is straight ahead.



**Acreage: 1.0 Acres**

**Facilities:**  
Play Equipment  
Open Space

## Fairview Cemetery Tot Lot

Location: 16th & Campus Streets

### Directions from Rec Center to Fairview Park

1. Start out on Main St. heading South.
  2. Turn Right on W 18th St. going West
  3. Turn Right on to Campus St..
  4. 1600 Campus St is on the Right
- The Park is visible from 12th St. next to the cemetery but there is no direct access off 12th St

**Acreage: A lot!**

### Facilities:

Lake & River Fishing  
Camping:  
(58 camping units, 37 have electrical hookups, modern showers)

Picnicking (4 open shelters & 1 enclosed are available to reserve)  
Hiking (Grass & hard surface trails)  
Bicycling                      Boating  
Windsurfing                  Playground  
Snowmobiling                Restrooms  
Cross-Country Skiing

This is a State Park— we give out only the information provided here and are not affiliated with any events or services relating to State Parks.



## George Wyth Memorial State Park

Call 319- 232-5505 For More Information

Location: Off Hwy 218

### About the Park

This large expanse of woodland is abundant with wildlife. Birdwatchers have observed over 200 different species and white-tail deer may be seen year-round. This Park has been designated as a National Urban Wildlife Sanctuary.

### Water Areas

The Park has several water areas:

East/Brinker Lake	(120 acres, open for power boating)
George Wyth Lake	(75 acres, no-wake lake)
Fisher Lake	(40 acre natural lake)
Alice Wyth Lake	(60 acres, electric motors only)
Cedar River	

### Directions from Rec Center to George Wyth Park

1. Start out on Main St. going North.
2. Take the 1st right onto Waterloo Rd.
3. Merge onto IA-27 N/IA-58 N via the ramp on the left.
4. Merge onto US-218 S toward Broadway St.
5. Take the Broadway St exit, EXIT 185, toward Airport.
6. Turn right onto Airport Blvd.
7. Take the 1st right onto Wyth Rd.
8. 2659 WYTH RD is on the Right.



**Acreage: 5.0 Acres**

### Facilities:

Open Shelter  
Open Space  
Playground Equipment  
Swings

## Greenhill Park & Place to Play Playground

Location: Algonquin & Ashworth

About the Park. Relocated to current location in 2006.



### Open Shelter Distances

To road: **110ft.**  
To Playground: **60ft**  
To Inclusive Area: **TBD**



### Directions from Rec Center to Greenhill Park

1. Start out going South on Main St.
2. Cross University and take Main St to the stoplight at Greenhill Rd
3. Take Right going West.
4. Continue across the Hwy and the park is on the left, South, off Greenhill

The current play equipment will eventually be moved, this park is not yet finished for the summer of 2019-keep checking for opening





**Acreage: 287.0 Acres**

**Trail Access:** S. Riverside Trail



# Hartman Reserve Nature Center

Location: Timber Dr & Greenwood Ave

## About the Park

The original 56 acres of land for Hartman Reserve Nature Center (originally named Camp Hartman Reserve) was purchased in 1938 by the YMCA with a \$4,000 donation from John C. Hartman. It was purchased by Black Hawk County in 1976 and greatly expanded in the years 1976, 1990 and 1994.

Hartman Reserve Nature Center is a wooded isle located in the heart of metropolitan Black Hawk County. This natural area extends from an upland bluff, overlooking the Cedar River Valley, down to the banks of the Cedar River. Within the forest are a series of gravel pits, backwater, vernal depressions, a small prairie, and an open meadow.

The Hartman Interpretive Center is perched on a bluff above the River in the midst of this upland forest. It houses displays and exhibits and is connected to the forest by a web of trails and bridges. The center is also available for rental.

This is a State Park—  
we give out only the  
information provided here and are not  
affiliated with any events or services

## Directions from Rec Center to Hartman Reserve

1. Start out on Main St. going North.
2. Take the 1st right onto Waterloo Rd.
3. Turn slight left onto Rainbow Dr. If you reach Valley Park Dr you've gone a little too far.
4. Turn left onto Edwards Ave.
5. Turn right onto Greenwood Ave.
6. Take the 1st left onto Reserve Dr.
7. 657 RESERVE DR. is on the right.



## Directions from Rec Center to Holmes Park

1. Start out going North on Main St.
2. Take the 1st left onto W 12th St.
3. Turn right onto Hudson Rd.
4. Turn left onto W 4th St.
5. W 4TH ST & HOLMES DR.

# Holmes Park

Location: West 4th St & Holmes

## About the Park

Acquired in 1965, this Park is adjacent to Hansen Elementary and Holmes Junior High Schools.

## Open Shelter Distances

- To road (W. 4th St.): **50ft.**
- To swings: **40ft.**
- To Playground: **20ft.**

**Acreage: 5.0 Acres**

## Facilities:

- Open Shelter
- Open Space
- Outdoor grills
- Play Equipment
- Swings

**Acreage: 13.2 Acres**

**Trail Access:**

Big Woods Lake Trail

**Facilities:**

Large Semi-Enclosed  
Shelter with Electricity & Water

Small Picnic Shelter with Electricity &  
Water

Paved lot  
Playground Equipment  
Heated Restrooms  
Parking Lots

# Gateway Park

Location: Lincoln & East Main

## About the Park

This Park is on the former Clay Equipment Company site, originally known as the Iowa Gate Company. There is also lighting for the park and shelters. Bookings for the small shelter or the semi-enclosed shelter are taken at the Cedar Falls Recreation Center.

## Directions from Hwy 218/58

1. From 218 South or Hwy 58 Exit off/ Merge onto IA-57 W toward Cedar Falls.
2. Turn right onto Main St.
3. LINCOLN ST & E MAIN ST.

## Directions from Rec Center

1. Start out on Main St. going North
2. Continue North Crossing 1st St and going over the bridge.
3. LINCOLN ST & E MAIN ST.



## Open Shelter Distances

- To road (Lincoln): **250ft.**
- To Playground: **215ft.**
- To Parking lot: **70ft.**
- To restrooms: **180ft.**
- To Paved lot: **25ft.**
- To riverfront: **200ft.**

## Celebration Shelter Distances

- To road (Greeley & Lincoln): **650ft.**
- To Playground: **250ft.**
- To Parking lot: **60ft.**
- To restrooms: **85ft.**
- To riverfront: **100ft.**



# Gateway Celebration Shelter



- Reservations for the Gateway Celebration Shelter are taken at The Cedar Falls Recreation Center
- The shelter is located on N. Main & 1st St.

## Fees

Monday - Thursday \$70.00

Friday - Sunday & Holidays \$110.00

## Keys/Deposit

- A deposit check of \$250.00 is required.
- You may pick up your electrical key at the Rec Center up to 1 Day in advance of a rental and leave your deposit.
- Deposits can be picked up 3 Business days after your rental if no damage is done and your KEY IS RETURNED.

## Gateway Renters

- Must be at least 21 years of age to rent the facility.
- Understand the facility can only be used from 8:00am thru the park closing at 10:30pm.
- Understand they are responsible for picking up all refuse and removing all bags of trash by closing time the day of the rental and placing it in the dumpster provided.
- Understand that they may NOT use any form of tape, nails, hooks, thumb tacks, staples, sticky tacky substance or like products on walls, windows, doors, ceiling, or fans.
- Understand they may not enter the building before 8:00am, store items overnight either before the rental or after the rental and must remove all items by 10:30pm.

## Celebration Shelter Notes

*The key that unlocks the electrical box does unlock the water box as well. The door for the water box once unlocked, does not open the easiest due to some binding but will open moving left to right (hinges on the right). The second key on the set unlocks the trash containment area.*

*Main Shelter 40' x 100'*

*Bump Out 20' x 16'*

*Main Shelter 6 electrical outlets*

*50 Amp Electrical outlet—in corner by water*

*Bump Out—2 electrical outlets*

# Island Park

Location: 500 Center St

About the Park  
 Acquired in 1922, this riverfront park serves (along with Tourist Park) as the northern entrance to downtown Cedar Falls. It originally had animals, a carousel and a tiny train for the entertainment of children and adults. Island Park is an important link in the recreation trail system. The Park has a variety of shaded and open areas for use along the Cedar River.

**Acreage:**  
**104 Acres**

**Trail Access:**  
 Cedar Valley Lakes

**Facilities:**  
 Beach House  
 Boat Ramps  
 Mooring Area  
 5 Open Shelters  
 Shelter #1 has Electricity  
 2 Play Equipment Areas  
 Picnic Areas  
 Open Space  
 Modern Restrooms  
 Parking Lots  
 Day Beach  
 Sand Volleyball Courts



**Directions from Hwy 218/58**

1. From 218 South or Hwy 58 Exit off/ Merge onto IA-57 W toward Cedar Falls. (1st Street)
2. Turn right onto Center St.
3. 500 Center Street is just ahead on the Left.

**Directions from Rec Center**

1. Start out on Main St. going North
2. Continue North turning Left( West) on 1st Street.
3. Take a Right (North) on to Center St.
4. 500 Center Street is just ahead on the Left.

**Open Shelter Distances:**

**Open Shelter #1**

To road (Center St.): **750ft.** To restrooms: **175ft.** To riverfront: **250ft.** To large parking lot: **30ft.**

**Open Shelter #2**

To road (Center St.): **100ft.** To restrooms: **250ft.** To riverfront: **700ft.** To Large Playground: **40ft.** To parking lot: **250ft.**

**Open Shelter #3**

To road (Center St.): **400ft.** To restrooms: **900ft.** To riverfront: **200ft.** To parking lot: **50ft.** To day beach/sand volleyball: **325ft.**

**Open Shelter #4**

To road (Center St.): **400ft.** To restrooms: **290ft.** To riverfront: **570ft.** To parking lot: **100ft.** To large playground: **300ft.**

**Open Shelter #5**

To road (Center St.): **230ft.** To restrooms: **150ft.** To riverfront: **950ft.** To small playground: **10ft.**

# Island Park Beach House

218 Center Street in Island Park Cedar Falls, Iowa

**The rental season for the Beach House is**

**May 1<sup>st</sup> - October 15<sup>th</sup>**

**\*Flooding Permitting**



When renting the facility for private events here are your options to choose from:

- The East or bridge side, which can hold up to 120 people in a banquet style seating if desired.
- The entire building with banquet style seating for around 180.

Each side has a stainless steel serving counter and a sink with hot and cold water available for use. The facility comes with the appropriate number of tables and chairs located in storage rooms on either side of the facility. A garage door separates the two sides. Men's and women's rest rooms are located on the east side of the building with access from the outside of the building and are available to the general public using the trails or park. Windows open easily for great ventilation and an enjoyable view of the park and river. Ceiling fans will help move the air in an effort to keep the inside of the building cool on the hot summer days ahead. A small deck/patio is available with the respective ends on the river side of the building.

Rentals can be made up to one year in advance in person at the Cedar Falls Recreation Center located at 110 East 13th Street in Cedar Falls. Those interested in inquiring about available dates can call the Rec Center at 319-273-8636 to obtain that information.

## **Fees:**

### East or bridge side:

Mon–Thurs \$125.00

Fri-Sun & All Holidays \$200.00

### Entire building

Mon–Thurs \$175.00

Fri-Sun & All Holidays \$275.00

## **Keys/Deposit**

- A deposit check of \$500.00 is required for east side or \$750.00 for the rental of the entire building.
- You may pick up your electrical key at the Rec Center up to 36 hours in advance of a rental and leave your deposit.
- Deposits can be picked up 3 business days after your rental if no damage is done and your KEY IS RETURNED.

## **Beach House Renters**

- Must be at least 21 years of age to rent the facility.
- Understand the facility can only be used from 8:00am thru the park closing at 10:30pm.
- Understand they are responsible for picking up all refuse and removing all bags of trash by closing time the day of the rental and placing it in the dumpster provided.
- Understand that they may NOT use any form of tape, nails, hooks, thumb tacks, staples, sticky tacky substance or like products on walls, windows, doors, ceiling, or fans.
- **Understand they may not enter the building before 8:00am, store items overnight either before the rental or after the rental and must remove all items by 10:30pm.** Please remember the park, and thus the building by ordinance, closes at 10:30pm so plan accordingly.



# Kiwanis Bluff Park

Location: Westwood & Timberledge

### About the Park

Acquired in 1964, this Park has a mature stand of native timber and under story vegetation.

### Directions from Rec Center to Kiwanis Bluff Park

1. Start out going North on Main St.
2. Turn Left onto W 1st St.
3. Take a right going North on N Ellen St.
4. Turn Left onto S. Park Rd.
5. Turn Right onto Baker Dr.
6. Turn Left onto S. Forest Rd.
7. Corner of WESTWOOD DR & TIMBERLEDGE DR.

### Open Shelter Distances

To Road (Westwood & Timberledge): **55ft.**  
 To Play Equipment: **35ft.**

**Acreage: 5.0 Acres**

### Facilities:

Play Equipment  
 Open Shelter



# Kuehn's Park

Location: Rownd & Pleasant

### About the Park

Acquired in 1950, this pleasant well-maintained open space is situated in a neighborhood comprised of homes with tree-shaded lawns.

### Open Shelter Distances

To road (Pleasant Dr.): **90ft.**  
 To basketball court: **115ft**  
 To playground: **35ft.**  
 To softball field: **200ft.**

**Acreage: 2.9 Acres**

### Facilities:

Open Shelter  
 Softball Field  
 Basketball Court  
 Open Space  
 Play Equipment

### Directions from Rec Center to Kuehn's Park

1. Start out going North on Main St.
2. Take the 1st right onto Waterloo Rd.
3. Turn left onto Pin Oak Dr.
4. Turn right onto Rownd St
5. ROWND ST & PLEASANT DR.

**Acreage: 4 Acres**

**Facilities:**

- 2 Open Shelters
- 3 Playground Areas
- Vista Point
- Basketball Court
- Open Space
- Modern Restroom
- Parking Lot

# Lookout Park

Location: Park & Mandalay

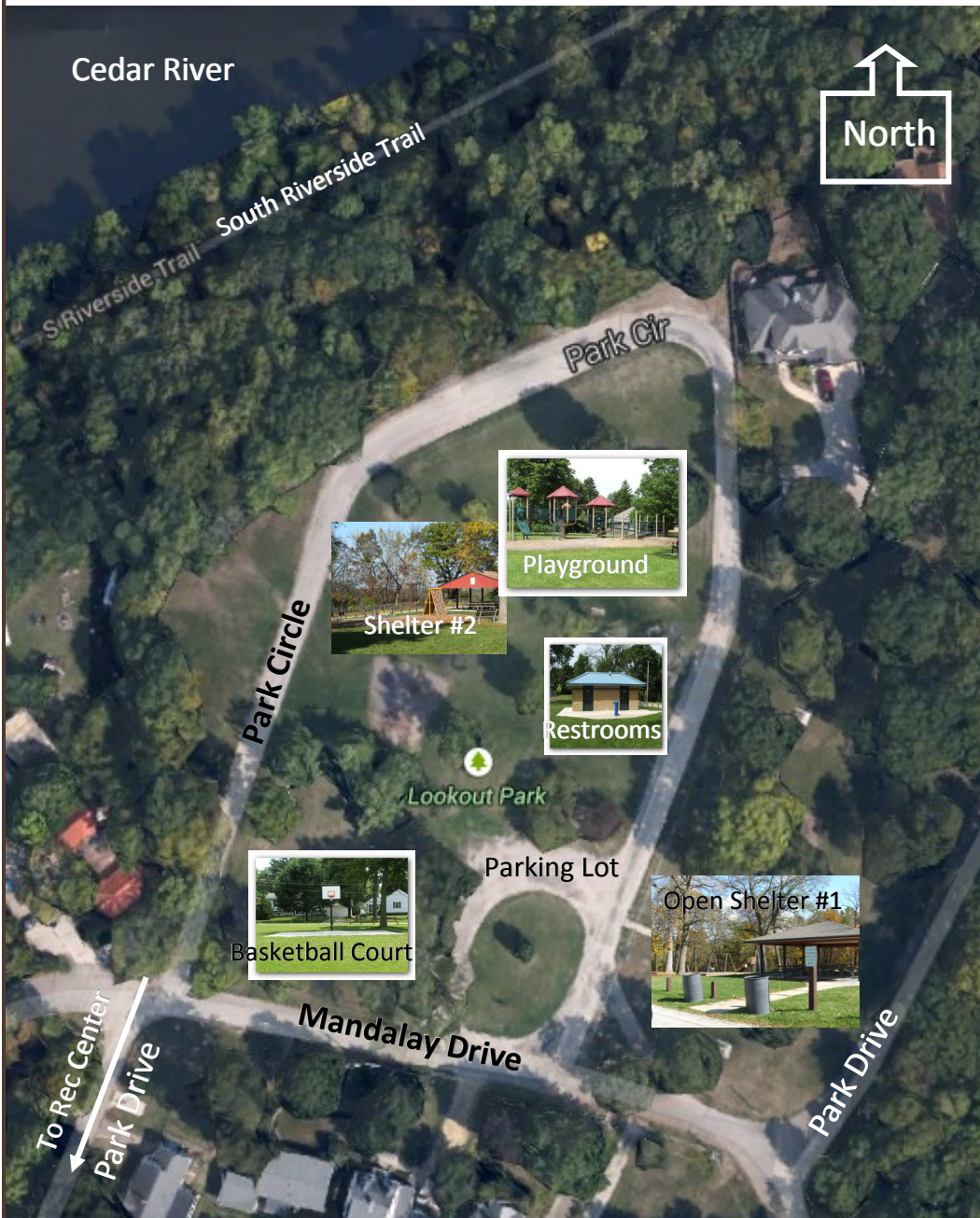
**About the Park**

Acquired in 1935/1941, originally called "the Bluffs" and acquired when Cedar Heights was incorporated into the City limits of Cedar Falls. This Park has 40 acres in natural ravines and possesses a commanding view of the City and river valley.

**Directions from Rec Center to Lookout Park**

1. Start out on Main St. going North
2. Take the 1st right onto Waterloo Rd.
3. Turn slight left onto Rainbow Dr. at light
4. Turn left onto Park Dr.
6. PARK DR & MANDALAY DR.

**\*\*This can be a confusing Park to get to**



**Open Shelter #1**

**Distances**

**11 picnic tables**

To road (Mandalay Dr.): **85ft.**

To basketball court: **200ft**

To playground: **175ft.**

To restrooms: **100ft.**

To parking lot: **30ft.**

**Open Shelter #2**

**Distances**

**6 picnic tables**

To road (Mandalay Dr.): **230ft.**

To basketball court: **160ft**

To playground: **75ft.**

To restrooms: **100ft.**

To parking lot: **110ft.**



# Main St. Cul de Sac

Location: South Main St.

### Directions from Rec Center to Main St. Cul de Sac

1. Start out going South on Main St.
2. Continue South crossing University Ave, then crossing Greenhill Rd. Main St. ends in the Main St. Cul de Sac.

About the Park  
Former South Main St.  
The Bike Trail runs parallel to Hwy 58

**Acreage: Very Small**

### Facilities:

- Fitness Zone
- Bike Trail
- Open Shelter

**Acreage: .1 Acres**

### Facilities:

- Open Space
- Open Shelter
- Book Exchange



### Directions from Rec Center to Neighbors Park

1. Start out going North on Main St.
2. Turn Left going West on 1st St.
3. Take a right going North on Center St.
4. Ahead on the left.
5. CENTER & CEDAR ST.

### Open Shelter

### Distances

To road: **70ft.**

# Neighbors Park

Location: Center & Cedar St.

### About the Park

This park was donated in 2013. The people of the neighborhood have put in the work and maintain it at times as well. Former Aerial Services land that flooded.

**Acreage: 1.5 Acres**

### Facilities:

- Shelter
- Restroom
- Open Green Space

Trail Access: South of the Mayors Pedestrian Bridge

# Nordic Ridge

Location: Recreation Trail South of the Mayors Pedestrian Bridge at the intersection of Quesada Ave. & Kael Trail



### Directions from Rec Center to Nordic Ridge Park

1. Start out on Main St. going South
2. Turn left onto E 18th St.
3. Merge onto IA-27 S/IA-58 S.
4. Turn left onto W Greenhill Rd.
5. Take the 1st right onto S Main St. If you reach Coneflower Pkwy you've gone about 0.1 miles too far
6. Take the 2nd right onto Cordoba
7. Turn left onto Quesada Ave.





**Acreage: 1.5 Acres**

**Facilities:**

- Open Space
- Gazebo (2 picnic tables)



**Directions from Rec Center to Olsen's Riverside Park**

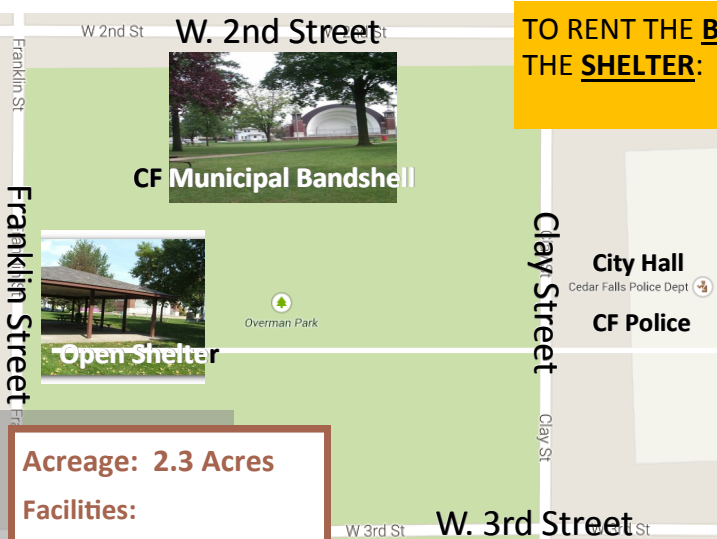
1. Start out going North on Main St.
2. Take a Left on to 1st St going West.
3. 1st St & Center St.

# Olsen's Riverside Park

Location: 401 W. 1st St.

**About the Park**

The site hosts public art sculpture "Epic", landscaping, open space and a reconstructed river wall. This park is part of the large scale riverfront development to take place north and east of the downtown area.



**TO RENT THE BANDSHELL:** Contact Dennis Downs 266-2922  
**THE SHELTER:** Is on a first come first serve basis. NOT RENTABLE

# Overman Park

Location: 3rd & Clay St.

**About the Park**

The earliest documented Park in Cedar Falls, acquired in 1853. This Park is a traditional commons occupying a full block in the Vintage Home District near downtown. The meticulously detailed, ornate Bandshell reinforces the Parks function as the focal point of the oldest neighborhood in Cedar Falls. It has straight walks leading from the corners of the Park to the center, dividing it into 4 equal quadrants.

This property was donated to the City of Cedar Falls by John Overman as home for the Black Hawk County Courthouse and was originally called "Court House Square".

**Acreage: 2.3 Acres**

**Facilities:**

- Open Shelter with Electricity
- CF Municipal Bandshell
- Pioneer Cabin Replica
- Picnic Area
- Drinking Fountain
- Bike Racks

**Open Shelter Distances:**

- To road (3rd&Clay): 300ft.
- To Bandshell: 125ft.

**Directions from Rec Center to Overman Park**

1. Start out going North on Main St.
2. Take a Left on to W 3rd St.
3. 3RD & CLAY St.

**Open Shelter Distances:**

- To Lincoln St.: 100ft.
- To Parking Lot: 15ft.
- To Playground: 2ft.

**Acreage: 5.0 Acres**

**Facilities:**

- Open Shelter
- Playground
- Play Field
- Parking Lot
- 5 Picnic Tables



**Directions from Rec Center to Police Park**

1. Start out going North on Main St.
2. Cross 1st St.
3. Take the slight Right on to Lincoln St.
4. Ahead on the left.
5. LINCOLN & ROOSEVELT ST.

# Police Officer's Park

Location: Lincoln & Roosevelt

**About the Park**

Acquired in 1966, this is a large, level open neighborhood park serving the area along Lincoln and Roosevelt Streets.



# Orchard Hill Park

Location: McClain & Primrose

## Open Shelter Distances:

- To Entrance (Primrose & McClain): **550ft**
- To parking lot: **120ft**
- To playground: **50ft**
- To restrooms: **150ft**



## About the Park:

Acquired in 1962, this is a large level open area surrounded on 3 sides by homes and Orchard Hill School. With no street frontage, it is accessed by McClain Drive.

## Acreage:

**8.0 Acres**

## Facilities:

Open Shelter

Ball Diamond

2 Tennis/Pickleball Courts

Basketball Court

Play Equipment

Open Space

Modern Restrooms

Drinking fountain

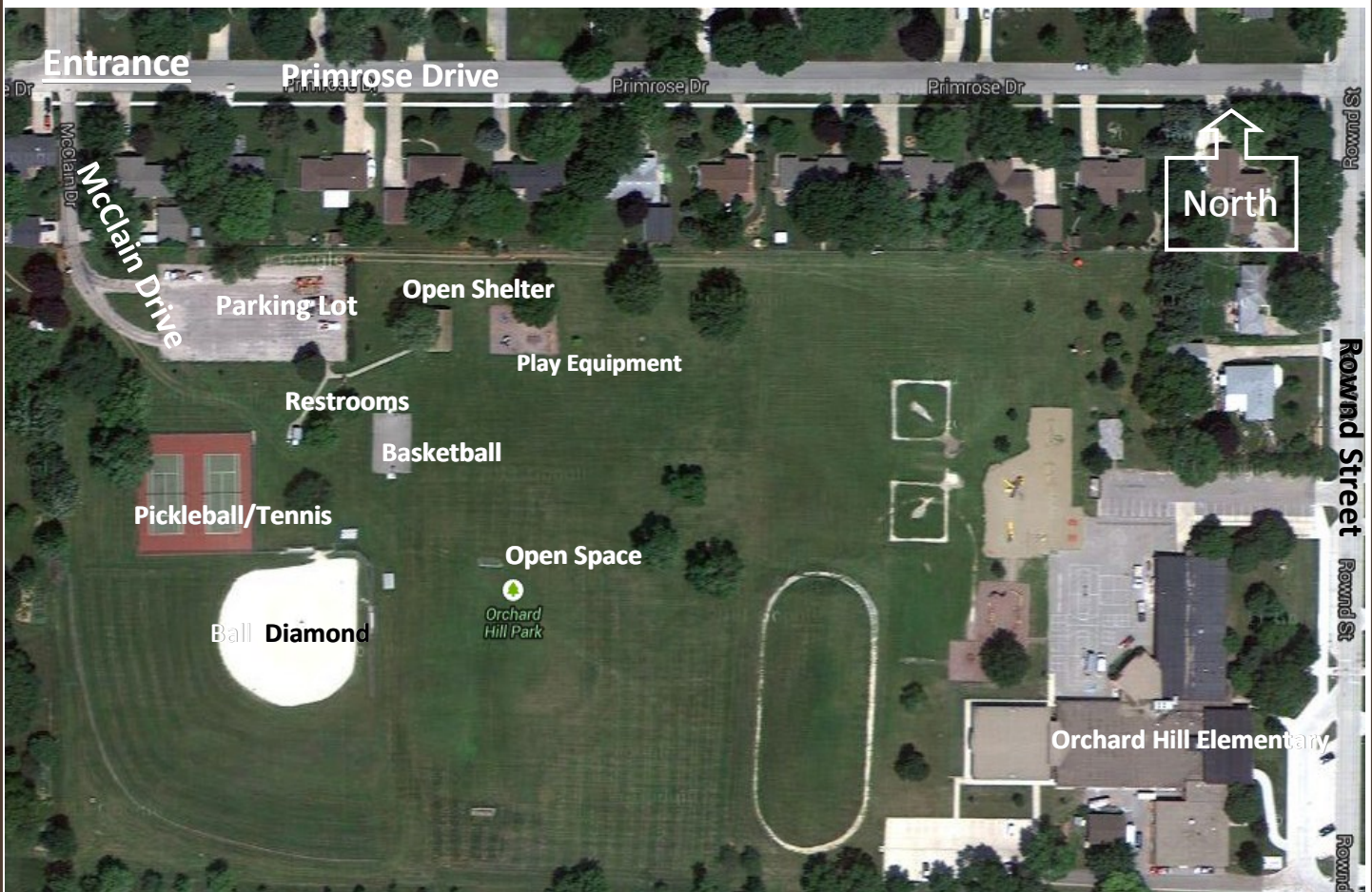
Parking Lot

14 Picnic tables

2 outdoor grills

## Directions from Rec Center to Orchard Hill Park:

1. Start out going North on Main St.
  2. Take the 1st right onto Waterloo Rd.
  3. Turn slight left onto University
  4. Turn right onto McClain Dr.
  5. MCCLAIN DR & PRIMROSE DR.
- it appears as though you are going down an alley to get to this park*



**Acreage: 3.0 Acres**

**Facilities:**

Fenced "Paw Park"  
Dog Exercise Area  
with Shelter

Separate Areas for  
Large and Small  
Breed Dogs

Modern Restroom  
Drinking Water



**Directions from Rec Center to Paw Park:**

1. Start out going South on Main St.
2. Cross University Ave.
3. 3200 S MAIN ST

# Paw Park

Location: South Main St.

**About the Park**

Annual passes are available for purchase at:  
City Hall 220 Clay Street Cedar Falls, IA 50613

**Cost of Annual Pass:** \$15.00 Each per Dog

**Daily Pass:** Less frequent Paw Park users can pay a daily  
visitor fee of \$2.00.



**Acreage: 1.0 Acres**

**Trail Access:**

Cedar Valley Lakes Trail

**Directions from Rec Center to Park**

1. Start out going North on Main St.
2. Cross 1st St.
3. 1st & MAIN

# Peter Melendy Park

Location: 1st & Main St

**About the Park**

Acquired in 1975, this Park is now a passive area with  
no access by vehicle. It contains the "Gateway to the  
Trails" sculpture, landscaping and a river walk.

Designated as Peter Melendy Park in 1976 by the  
Cedar Falls' Daughters of the American Revolution in  
recognition of Peter Melendy as a historical figure in  
the establishment of the Cedar Falls community.



**Acreage: 20.0 Acres**

**Trail Access:** Pheasant Ridge Trail

**Facilities:** Storm Shelter

**SYNTHETIC TURF FIELD**

**\*This field is rented out by the Rec Center**

**Directions from Rec Center to Robinson Dresser**

1. Start out going North on Main St.
2. Take a Left going West at the Light on 12th St.
3. Cross Hudson Rd and continue West.
4. ACROSS FROM PHEASANT RIDGE GOLF ENTRANCE

# Robinson-Dresser Sports Complex

Location: 3626 w. 12th

**About the Park**

This Complex is owned by the Cedar Falls Community  
School District. Facilities: softball and baseball diamonds,  
tennis courts and synthetic turf field. This complex is also  
the home to the UNI Softball team.

**Acreage: 10.0 Acres**

**Facilities:**

- 2 Open Shelters
- Shelter #1 has Electricity
- 2 Lighted Ball Diamonds
- Basketball Court
- Concessions Stand
- Play Equipment
- Play Field
- Modern Restrooms
- Parking Lot
- 11 Picnic Tables

**Trail Access:**  
Cedar Prairie Trail Access

*This trail head has one parking lot and includes Krieg's Crossing, a pedestrian/bicycle bridge connecting Pfeiffer Spring's Park to George Wyth Memorial State Park and South Riverside Trail access.*

# Pfeiffer Springs Park

Location: Grand Blvd

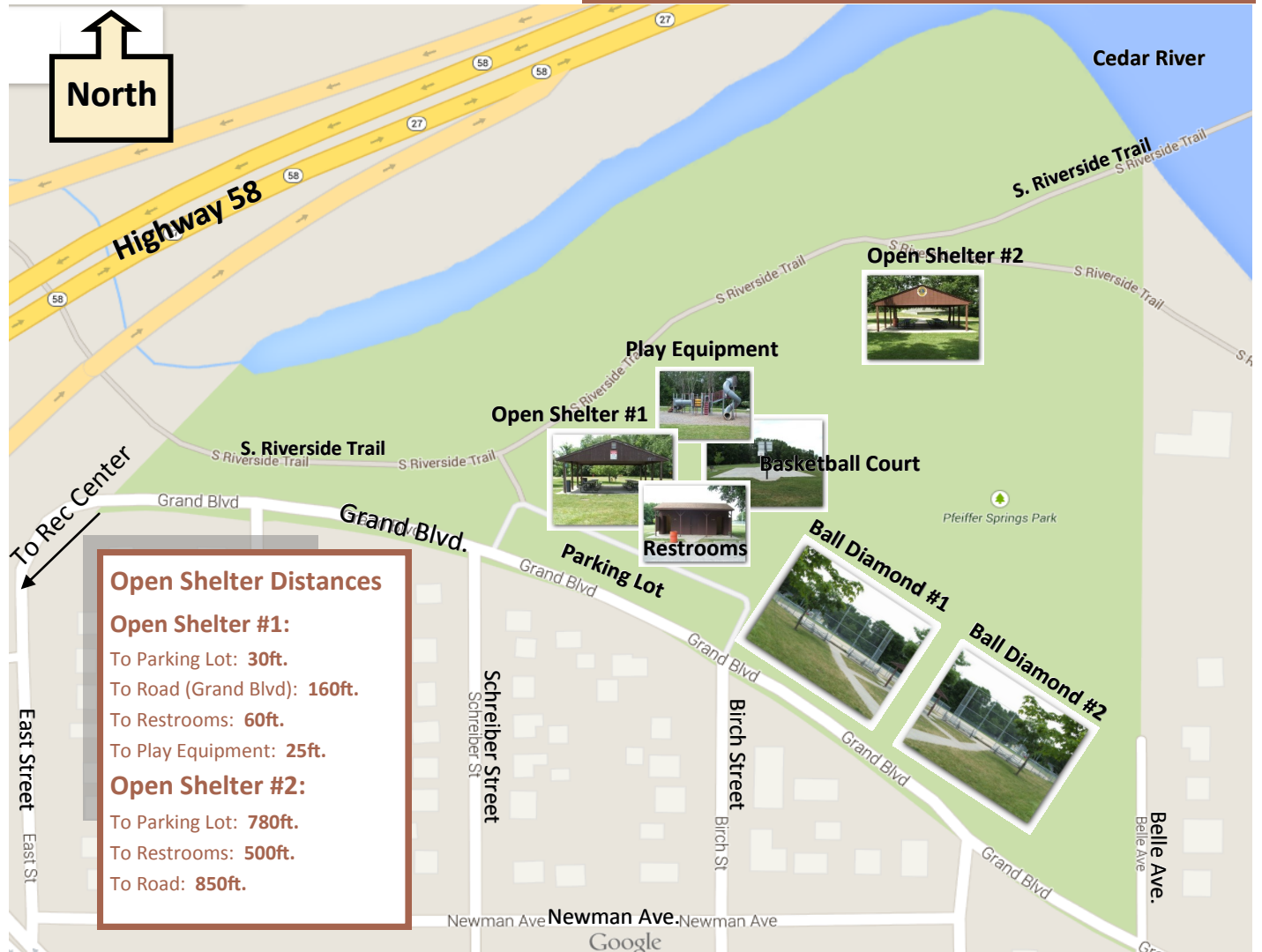
**About the Park**

Acquired in 1921 from land donated by Mary Pfeiffer. This Park is named for a Spring on the south bank of Dry Run creek that was the first source of water for the City. Earlier in this century it was also developed as a trout hatchery. Remnants of the old hatchery still exist and are the Park's most interesting and unusual feature.

The Park has two distinct areas, the densely wooded northern and eastern perimeter and the old railroad grade form the lower section. The upper section visible from Grand Boulevard is level and open and is the site of all the park's facilities.

**Directions from Rec Center to Pfeiffer Park**

1. Start out going North on Main St.
2. Take the 1st Right onto Waterloo Rd.
3. Take a sharp Left on East St. -Just after the overpass.
4. Take the 2nd Right on to Grand Blvd.
5. 900 GRAND BLVD.



**Acreage: 165.0 Acres**

**Facilities:**

- 2 Lakes
- Handicapped Fishing Dock
- 4 Open Shelters
- Nature Trail
- Restrooms
- 2 Parking Lots
- Boat Ramp
- 4 Fitness Zones

**Trail Access:**

Cedar Lakes Trail

**Open Shelter Distances**

**Open Shelter #1:**

- To road (Viking Rd.): **2,550ft.**
- To parking lot: **80ft.**
- To restroom: **160ft.**
- To Prairie Lake: **50ft.**
- To Trail: **190ft.**

**Open Shelter #4:**

- To road (Viking Rd.): **440ft.**
- To parking lot: **390ft.**
- To lake: **40ft.**

# Prairie Lakes Park

Location: Viking & Hudson

**About the Park**

Acquired in 1987, this large tract was acquired from the Iowa Department of Transportation after serving as a borrow site for the Highway 58 construction. South Lake has 23 surface acres, North Lake has 7 surface acres. These are passive areas with wetlands and prairie grasses.

**Visitors & Tourism Office**

The Visitors and Tourism Office is located on the west edge of the park and can be accessed from Hudson Road.

**Directions from Rec Center to Prairie Lakes Park**

1. Start out going South on Main St.
2. Take a Right going West on to University Ave.
3. Take Left going South on to Hudson Road.
4. Take a Left going East on to Viking Road.
5. VIKING & HUDSON.

*\*This park is very confusing and there is some discrepancy of the numbers on the Shelters as they are not marked clearly. But worth mentioning, the Main Shelter, what we are calling #1 is the only one of the 3 with direct driving access and parking and it is the biggest for space and seating. Maybe a notation written on the contract with a staff initial would be a good idea for clarification.*





**Acreage: 17.0 Acres**

**Facilities:**

Recreation Trail  
Open Space

**Trail Access:**

Cedar Prairie Trail

Directions from Rec Center to Rownd Park

1. Start out going South on Main St.
2. Take a Left on to University Ave.
3. Take a Right on to Dallas Dr.
4. Take a Right on to Colorado Rd.
5. This takes you to the Colorado Rd Cul-de-Sac.

# Rownd Park

**Location:** Near the Intersection of S. Main St. and South of Hwy 58 Overpass

**About the Park**

Acquired in 1995. Backing up to a residential area, this park serves as a passive tract of land where a branch of the recreation trail winds along the south side of Dry Run Creek to connect to the main trail at the creek bridge. The land was donated to the Iowa State Normal School now known as the UNI by the Rownd family and was originally the UNI golf course.



# Sartori Memorial Hospital Park

**Location:** 4th & College St.

**About the Park:** **Not Rentable: 1st come 1st serve**

Acquired in 1985, this is a neighborhood Park on the northern portion of Sartori Hospital grounds. The sloping site is dominated by 2 features: an old windbreak plating of towering evergreens and an elaborate new shelter in the east part of the Park.

**Acreage: 2.0 Acres**

**Facilities:**

Open Shelter (Gazebo)-1 picnic table  
Play Equipment  
Parking Lot-Shared with Hospital

**Open Shelter Distances**

To road (4th&College): **175ft.**  
To parking lot: **100ft.**  
To Playground: **50ft.**

Directions from Rec Center to Sartori Park

1. Start out going North on Main St.
2. Take a Left going West on 6th St.
3. Turn Right going North on College St.
4. PARK IS ON THE LEFT.



**Acreage: 1.0 Acres**

**Facilities:**

Open Shelter-6 picnic tables

# Seerley Park

**Location:** Seerley & Iowa

**About the Park**

Acquired in 1893, Seerley, like Overman Park, is a traditional open commons on a full square block of land in an established neighborhood. Named for Homer Seerley, President of Iowa State Teachers College, now the University of Northern Iowa, from 1886 to 1928.



**Open Shelter Distances**

To road (Seerley & Iowa): **300ft.**  
To Playground: **130ft.**

Directions from Rec Center to Seerley Park

1. Start out going South on Main St.
2. Take a Right on to Seerley Blvd going West.



# Skate Park

Location: Seerley & Grove

## About the Park

Constructed in 2000, the Cedar Falls Skate Park features a variety of facilities.

**Acreage: 5.0 Acres**

### Facilities:

Fenced Concrete Area  
Grind Rail  
Half Pyramid w/Ledge  
4' Quarterpipe  
5' Quarterpipe  
Fun Grind Box  
Fly Box with Ledge  
Seasonal Restroom

### Directions from Rec Center to Skate Park

1. Start out going South on Main St.
2. Take a Left going East on to Seerley Blvd.
3. Take a right on to Grove St.
4. Seerley & Grove: Located next to Peet Jr. High.



# Southdale Park

Location: Southlawn & Bonita

## About the Park

**Belongs to Southdale School as of 2013—we do not rent out any area or shelter located at the park.**

### Directions from Rec Center to Southdale Park

1. Start out going South on Main St.
2. Cross University Ave and take a Left on to Orchard.
3. Take a Right on to Dallas Dr.
4. Turn Left on to Bonita Blvd.
5. Southlawn & Bonita



**Acreage:  
8.4 Acres**

### Facilities:

Ice House Museum  
Tourism Info Station  
Little Red Schoolhouse Museum  
River Wall  
Gazebo  
Open Space  
Restrooms  
Parking Lot  
Rentable Band Stage

### Trail Access:

Cedar Valley Lakes Trail



# Sturgis Park

Location: W. 1st St & Clay

## About the Park

Acquired in 1975/76, this Park recalls the City's original name, Sturgis Falls. The Park lies astride the filled-in Mill Race on the south bank of the Cedar River next to the dam built at the falls. It is the site of three historically significant buildings. One of them is the Historical Society's Ice House Museum (on the National Register of Historic Places). The other two, the Behrens-Rapp Gas Station (now a Tourist Information Center) and the Little Red Schoolhouse, have been moved to the Park from their original locations.

In the Park itself, only the active railroad bisecting it and the Ice House location recall the importance of this area to the City's history. The Park is dedicated to the earliest permanent settlers here, William and Dorothy Sturgis, who built their double log cabin on this site in 1845, where the Ice House Museum stands.

### Directions from Rec Center to Sturgis Park

1. Start out going North on Main St.
2. Take a Left on 1st St going West
3. 1st & CLAY

**Acreage: .4 Acres**

**Facilities:**

- Open Space
- Open Shelter-2 picnic tables



**Open Shelter Distances**

- To road: **125ft.**
- To parking lot: **40ft.**

**Directions from Rec Center to TJs Park**

1. Start out going North on Main St.
2. Cross 1st St.
3. Take the slight Right on to Lincoln St.
4. Ahead on the left.
5. LINCOLN & ROOSEVELT ST.

# TJ's Park

Location: Lincoln & Roosevelt

*Adjacent to Police Officer's Park*

About the Park: This park was donated in 1996.



# Tourist Park

Location: 400 Center St.

**About the Park**

Acquired in 1922, this area originally held tourist cabins and included animals (i.e. monkeys, raccoons and deer) as attractions. At one time animals were in Island Park as well. The park is set in a mature grove of floodplain trees and dense under story vegetation lines the west bank of Snag Creek. The levee between the Center Street Bridge and the dam separates the Park from the riverfront, but provides access to a commanding view of the dam, Cedar River and downtown Cedar Falls.



**Acreage: 10.0 Acres**

**Facilities:**

- 18 Hole Disc Golf Course
- Open Shelter-3 picnic tables
- Riverfront
- Restrooms
- Parking Lot

**Open Shelter Distances:**

- To Road (Center St.): **175ft.**
- To restrooms: **110ft.**
- To parking lot: **30ft.**
- To riverfront: **175ft.**

**Directions from Rec Center to Tourist Park**

1. Start out on Main St. going North
2. Continue North turning Left( West) on 1st Street.
3. Take a Right (North) on to Center St.
4. 400 Center Street is just ahead on the Right.



**Acreage: 101 Acres**

**Facilities:**

- Nature Preserve
- Hiking Trails
- Riverfront
- Parking Lot

**Directions from Rec Center to Ulrich Park**

1. Start out going North on Main St.
2. Take a left on 1st St going West.
3. Take a Right going North on to Union Rd.
4. Take a Right on to Skyview.
5. 3300 SKYVIEW DR.

# Ulrich Park

Location: 3300 Skyview Dr.

**About the Park**

Donated in 1965, this Park is a combination of upland and floodplain woodlands on the west bank of the Cedar River. It functions as a nature preserve. Park boundaries extend across the main river channel to include a small section of the east end of the island west of Cottage Row Drive.





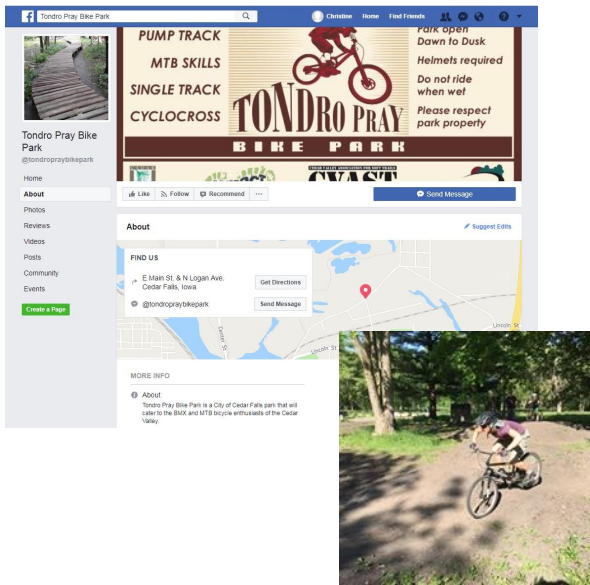
# Tondro Pray BMX Park

Location: E Main St. & N Logan Ave.  
Cedar Falls, Iowa

About the Park: Tondro/Pray Bike Park was developed to be a park for BMX bicycling, cyclocross and mountain bikes. The land was established by early land developers Tondro, Pray and Boone and the underlying platting bares their names. Other park facilities have been named in similar manner.

## Facilities:

- \*Shelter with Electricity
- \*Port-A-Potty
- \*Bike Station





Playground Distance  
from Valley High Dr.:  
**175ft.**

**Acreage:**  
**5.0 Acres**

**Facilities:**  
Open Space  
Playground

**Directions from Rec Center to Valley High Park**

1. Start out going South on Main St.
2. Take a Left on to University Ave going East .
3. Take a Right going on to Cedar Heights Dr.
4. Turn Left on to Valley High Dr.
5. 3030 Valley High Dr.

# Valley High Park

Location: East end of Valley High Dr.  
-East of Cedar Heights Dr.

**About the Park**

Purchased as a detention facility, the park is located on an elevated flat space on the north end of the area.



**Directions from Rec Center to Veterans Park**

1. Across the Street

# Veterans Park

Location: E. 14th St. & Waterloo Rd.

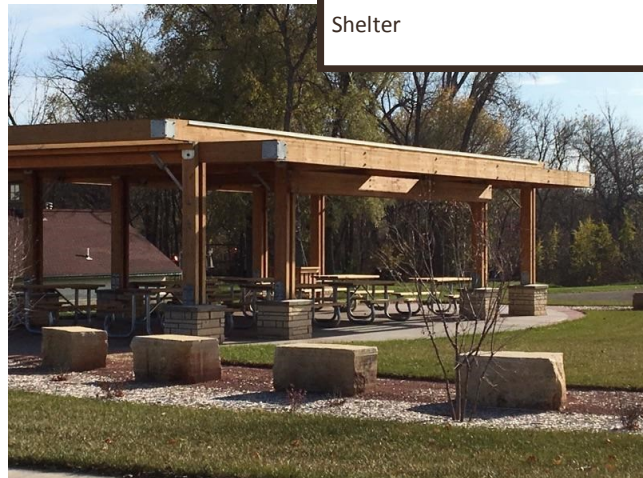
**About the Park**

Acquired in 1996, this park is dedicated to those who have served their country. The park pays tribute to all 5 military services and recognizes individuals by engraving their names on the five brick walkways established in this passive park. It is an area created for quiet reflection and/or public ceremony.

**Acreage: 1.0 Acres**

**Facilities:**

- 50-Foot Flagpole
- Park Benches
- Replica of the Statue of Liberty (originally located in Overman Park)
- Freedom Rock
- Shelter



**Acreage: 39.0 Acres**

**Facilities:**

- 6 Open Shelters
- Playground
- Open Spaces
- Modern Restrooms
- Parking Lots
- Riverfront
- Ball Diamond
- Boat Ramp

**Directions from Rec Center to Washington Park**

1. Start out going North on Main St.
2. Take a Right onto 9th St.  
(This is now the only entrance to the Park)
3. Behind the Western Home -  
Cross the tracks and follow roadway through park.

# Washington Park

Location: E. 9th St.

## About the Park

Acquired in 1920, this park at one time had a 9-hole golf course next to the Cedar River and has a large open play field. The golf course was permanently destroyed with the 2008 floods. With land donated by Henry Pfeiffer and a gift of \$10,000 to build the golf course with the stipulation that the park be named for his Brother, Washington Pfeiffer. This park is adjacent to an interesting stretch of river, with opportunities for observation of migratory birds wintering on the open river and views of activity along the popular recreation trail on the opposite bank. This park has gone through a major renovation and is available for many public uses.

## Open Shelter Distances and Information:

**Open Shelter #1** (6 picnic tables): To road: **150ft.** To restrooms: **200ft.**

To ball diamond: **270ft.** To parking lot: **95ft.** To playground: **35ft.**

**Open Shelter #2** (6 picnic tables): To road: **55ft.** To parking lot: **40ft.**

To pond: **50ft.**

**Open Shelter #3** (6 picnic tables): To road : **160ft.** To parking lot: **150ft.**

To pond: **45ft.**

**Open Shelter #4** (6 picnic tables): To road : **50ft.** To parking lot: **80ft.**

To pond: **60ft.**

**Open Shelter #5** (6 picnic tables): To road: **75ft.** To parking lot: **60ft.**

To riverfront: **65ft.**

**Open Shelter #6** (6 picnic tables): To road: **20ft.** To parking lot: **3ft.**

To riverfront: **90ft.** To boat ramp: **100ft.**



Rec Center

East 12th Street

Elizabeth St

Irving Street

East 10th St.

East 9th St. - E 9th St

Entrance to Park



Cedar Falls Utilities

Ball Diamond



South Riverside Trail

Parking Lot

Parking lot



Parking lot



Parking lot

Washington Park

Mullen's Pond



Parking lot



Parking lot

Boat Ramp

Cedar River

Cedar Valley Lakes Trail

Highway 58

